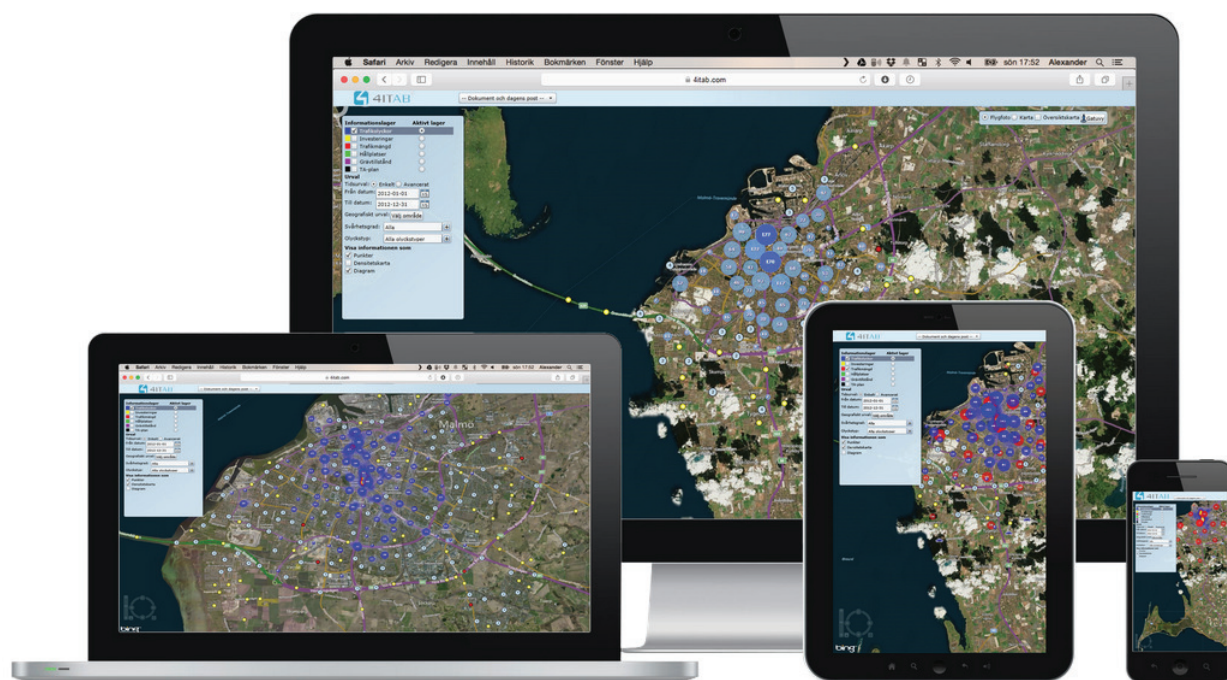




GEOGRAPHICALLY ENABLING BUSINESS INTELLIGENCE



4MAPS is a decision support system with geographic-specific data. It does not matter from what source the information is retrieved. 4MAPS automates visualization of the map according to the users desired manner. From the map, all underlying information are track-able and can be updated automatically.

Business Intelligence is a process to gain clearer understanding of operational behaviour. Analysis, interpretation, reporting and visualization are some of the important features used to support decision making with information from business applications.

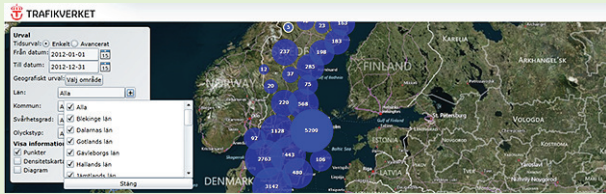
Geographical data represent spatial locations and have attributes, like where and what. Geographical data is traditionally stored within a GIS application. Files represent for example buildings, installations, traffic information etc. GIS and BI applications are historically separated. Users typically have to enter information or perform analysis using two different applications.

4MAPS is a product that offers business intelligence and data visualization solutions. This includes capabilities for creating business data and data aggregates, storage of spatial and non-spatial data, processing and querying of business data, with reporting and data visualization.

4MAPS adds geographically enabling to business intelligence. Secondly by addition of elements, filter and by visualization to discover previously unknown trends.

4MAPS also adds the additional visual reporting component and thereby creating the possibility to extended return on your GIS investment.

If you are an application provider and wants a BI cloud solution...



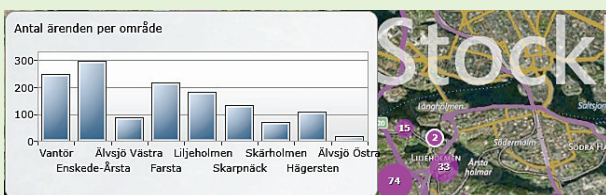
4Maps is a web-based application that enables spatial location to data base objects and information. 4Maps is built to handle very big data sets and thereby make geographical information available to a broad variety of user needs. 4Maps is a perfect geographical platform for all kinds of cloud services.

If you are a solution provider and want a BI application to your customer...



4Maps is designed to work with a wide range of applications used in large organizations. 4Maps has been used for several years to visualize information from national databases, ERP-systems, sensor data sets, GIS systems together with GPS- and mobile phone positioning. 4Maps is a perfect choice for any organisation which needs to add spatial data to its information.

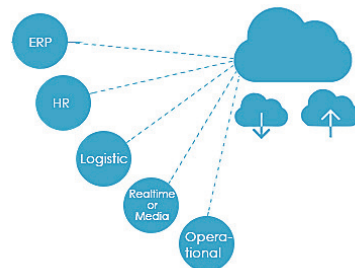
If you are an end user with Microsoft technology and want the best...



4Maps is based on Microsoft technology but can read information from virtually any data source. 4Maps will increase business value to an environment with Microsoft solutions. If a database has coordinate values 4Maps can act as a visualization tool for that content, furthermore, by integrating 4Maps with existing databases you can add location analytics to your BI platform.

Some benefits and features

- The information is presented in a more clearly way on a map and are more accessible.
- The user has access to all (approved) files simultaneously, separately in any type, for example partner, project, time status, customer etc.
- Make time flows for various projects; planned project duration, validity of permits, warning of cases approaching deadlines.
- Identify relationships between various sources of information; accidents, traffic flows, reports, etc.
- State management; deadlines, parallel projects/issues, case times that exceeded the established targets for processing times.
- Decision making is faster, easier and safer when analysing data, risks and testing different scenarios.
- Manage large volumes of information (so called big data) by selecting only interesting/relevant information.
- Quick and easy to find problem areas and see new solutions/opportunities.
- Supporting documentation such as reports and statistics is generated in seconds.
- Streamlines workflow and speeds up the decision-making processes by providing common and easily accessible information.
- Flexible; can be tailored to virtually any customer needs, visual; combines data that previously lacked context, media friendly; handle images, videos, simulations, etc.



AGILE as the organization quickly can begin building reports and discover new ways to manage information

SIMPLE for the end user to see prepared presentations, to create their own reports and to process the content

ROBUST with quality checked and traceable data, reliable calculations and adequate permission control

POWERFUL since OLAP-technology provides for short response time also when processing very big data sets

SMART as several different information needs can be satisfied within one single and entirely web based tool

COST-EFFECTIVE because many users can be served without expensive and complicated license agreements